

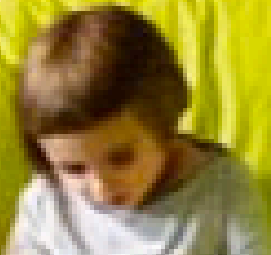


Library futures: Converging and diverging

Lorcan Dempsey

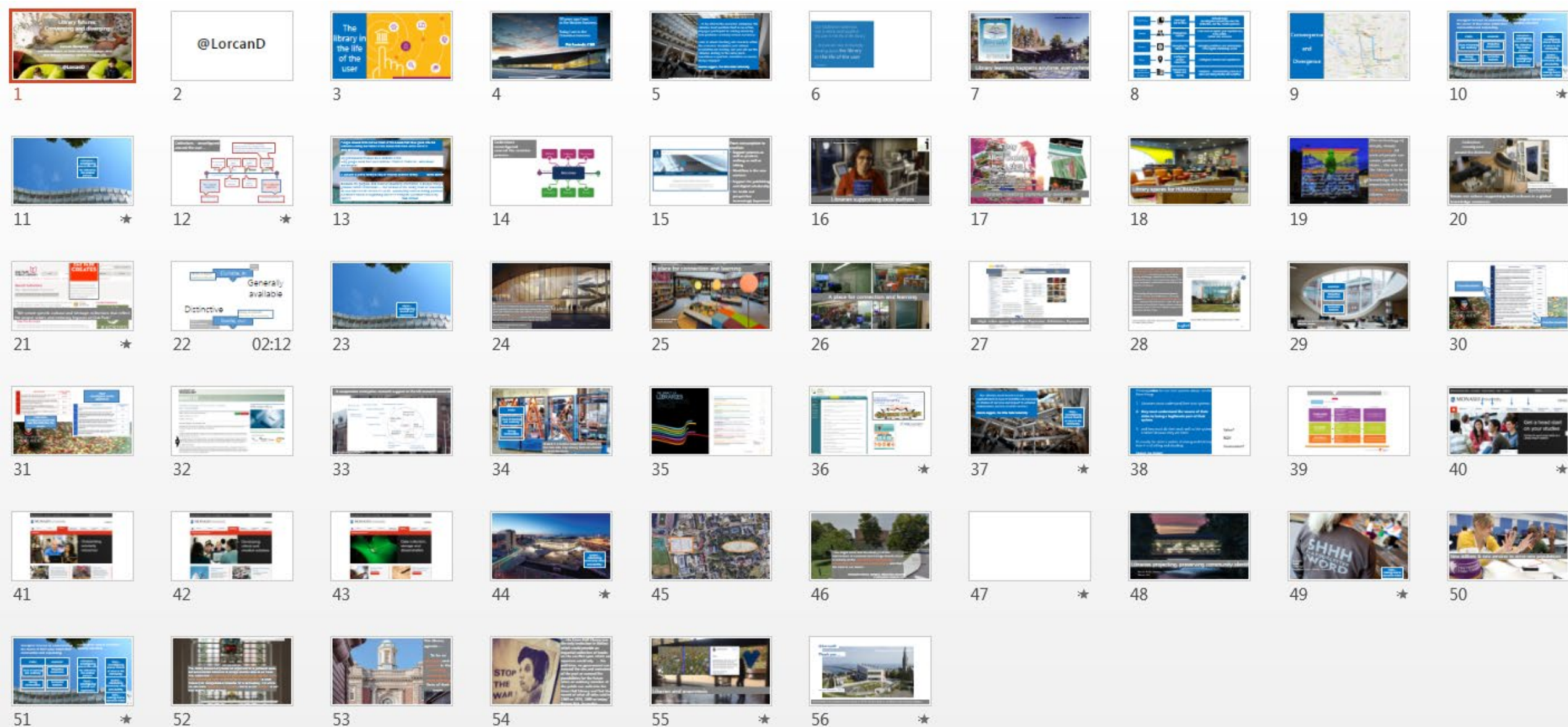
**With Helene Blowers, Liz Morris and Constance Malpas. OCLC
ALIA National Conference, Adelaide, 30 August 2016**

@LorcanD



@LorcanD

Overview



The library in the life of the user



A photograph of a modern library building at dusk. The building has a long, low profile with a dark roof and large glass windows that are illuminated from within, showing interior shelves and furniture. The sky is a mix of dark blue and orange from the setting or rising sun. Power lines are visible in the foreground. A blue text box is overlaid on the right side of the image.

20 years ago I was
in the libraries business.

Today I am in the
Columbus business.

Pat Losinski, CML

... to be vital to the academic enterprise, the Libraries must position itself as an active, engaged participant in solving university-level problems (*Looking outside ourselves*); ...


Look to where teaching and research within the academic disciplines and cultural acquisition are moving, and you will see the Libraries skating to the same puck, sometimes as partner, sometimes as leader, always engaged.

Damon Jaggars, The Ohio State University

Our traditional model was
one in which we thought of
the user in the life of the library

... but we are now increasingly
thinking about **the library**
in the life of the user


BAINBRIDGE PUBLIC LIBRARY
A BRANCH OF KITSAP REGIONAL LIBRARY



ferry tales
A monthly book group aboard the ferry

Enjoy wonderful books and conversation during your commute. On the 3:50 ferry, just come ready to talk about something you've read and loved. For the 4:40 riders, we'll read and discuss one shared title each month. For updates, visit krlferrytales.wordpress.com.

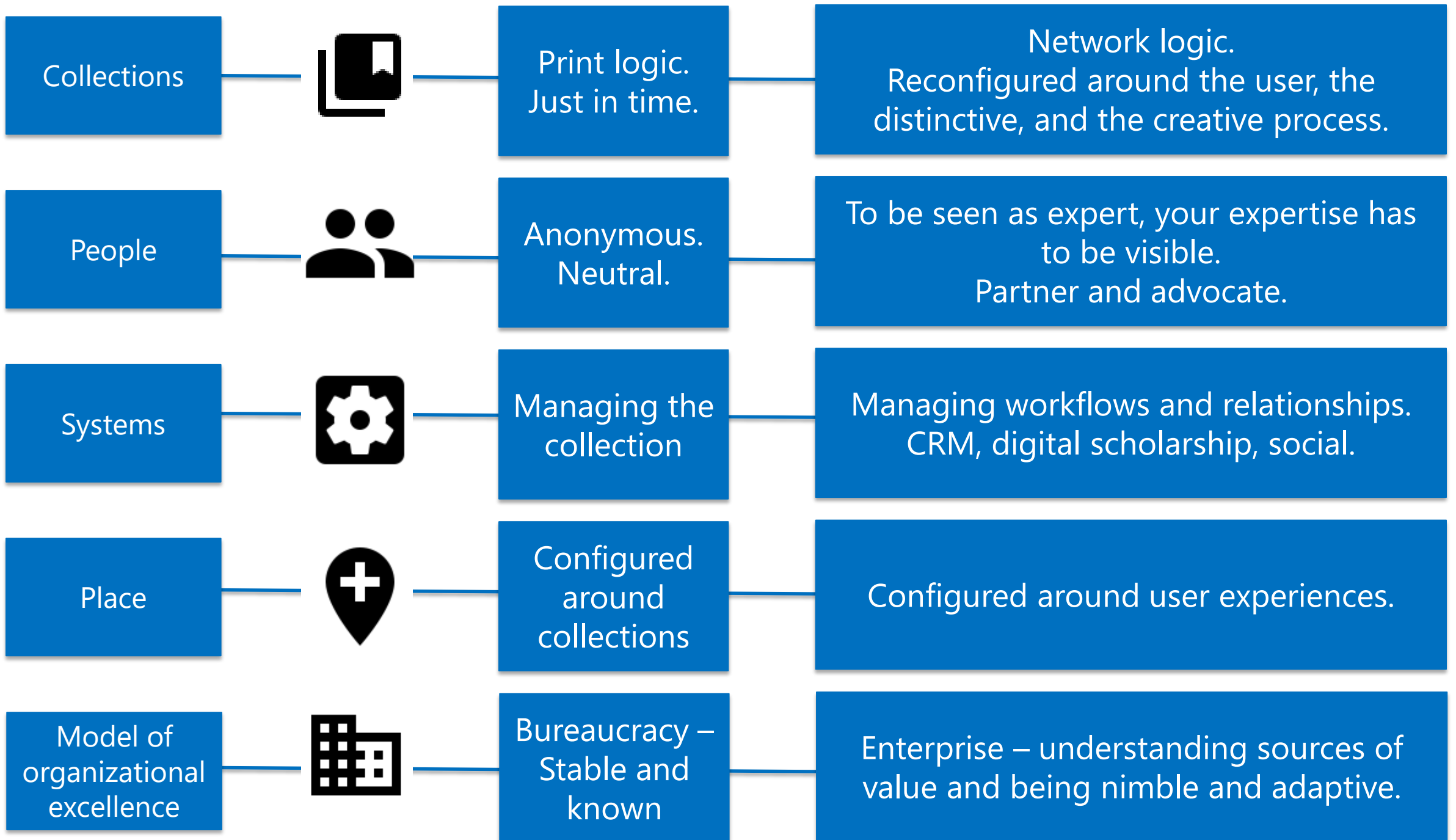
Second Thursday of each month
3:50 p.m. ~ Bainbridge to Seattle
4:40 p.m. ~ Seattle to Bainbridge



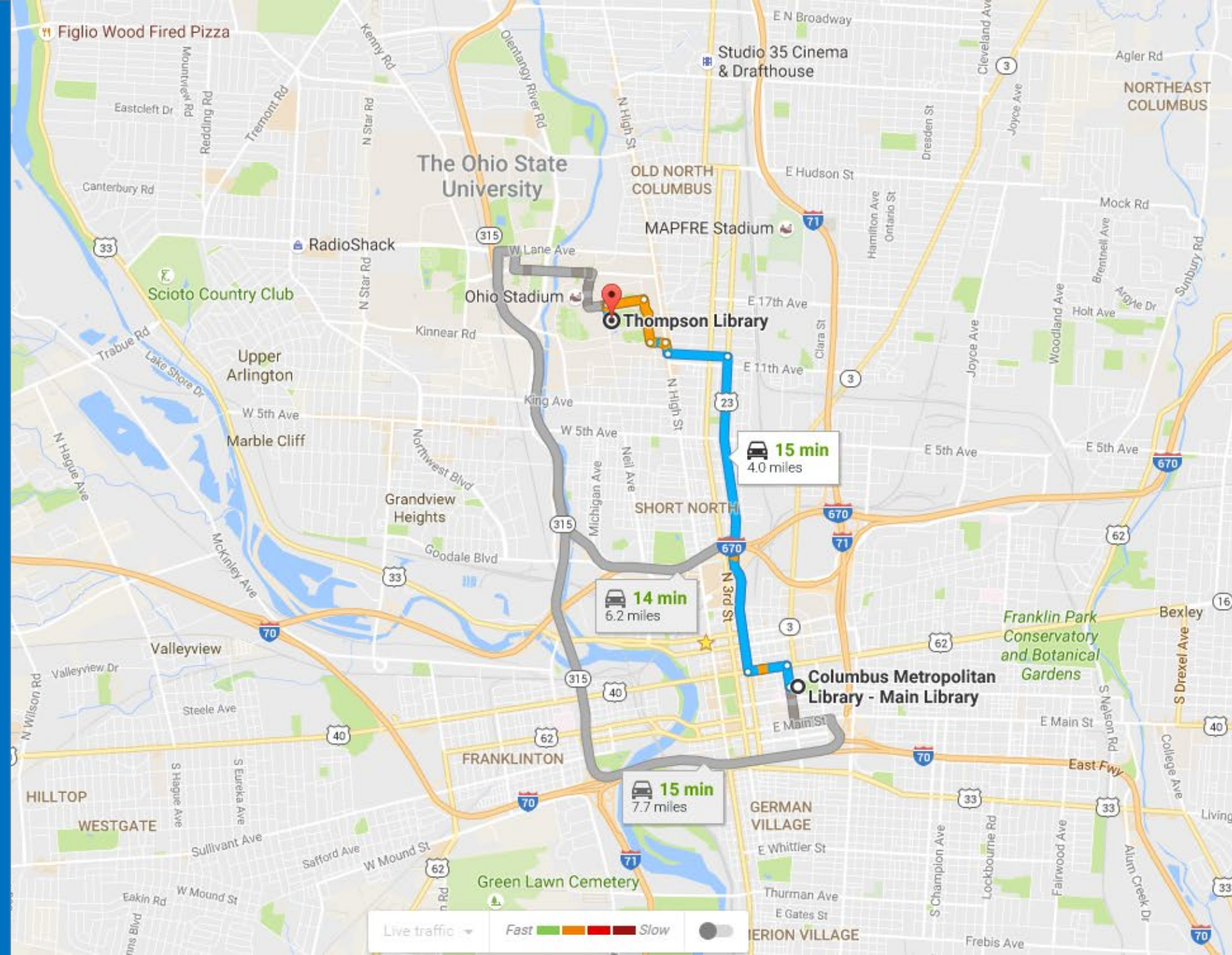
www.krl.org



Library learning happens anytime, *everywhere*



Convergence and Divergence



Divergent: focused on understanding the source of their value within their communities and responding.

Convergent: shared directions, variably executed.

Public	Academic
Lives of learning and creativity.	Productive researchers.
Strong communities.	Successful students.


Collections – reconfiguring around the user, the distinctive, the creative process.

Places – reconfiguring around user experiences.

Story – reconfiguring around sources of value to the community.

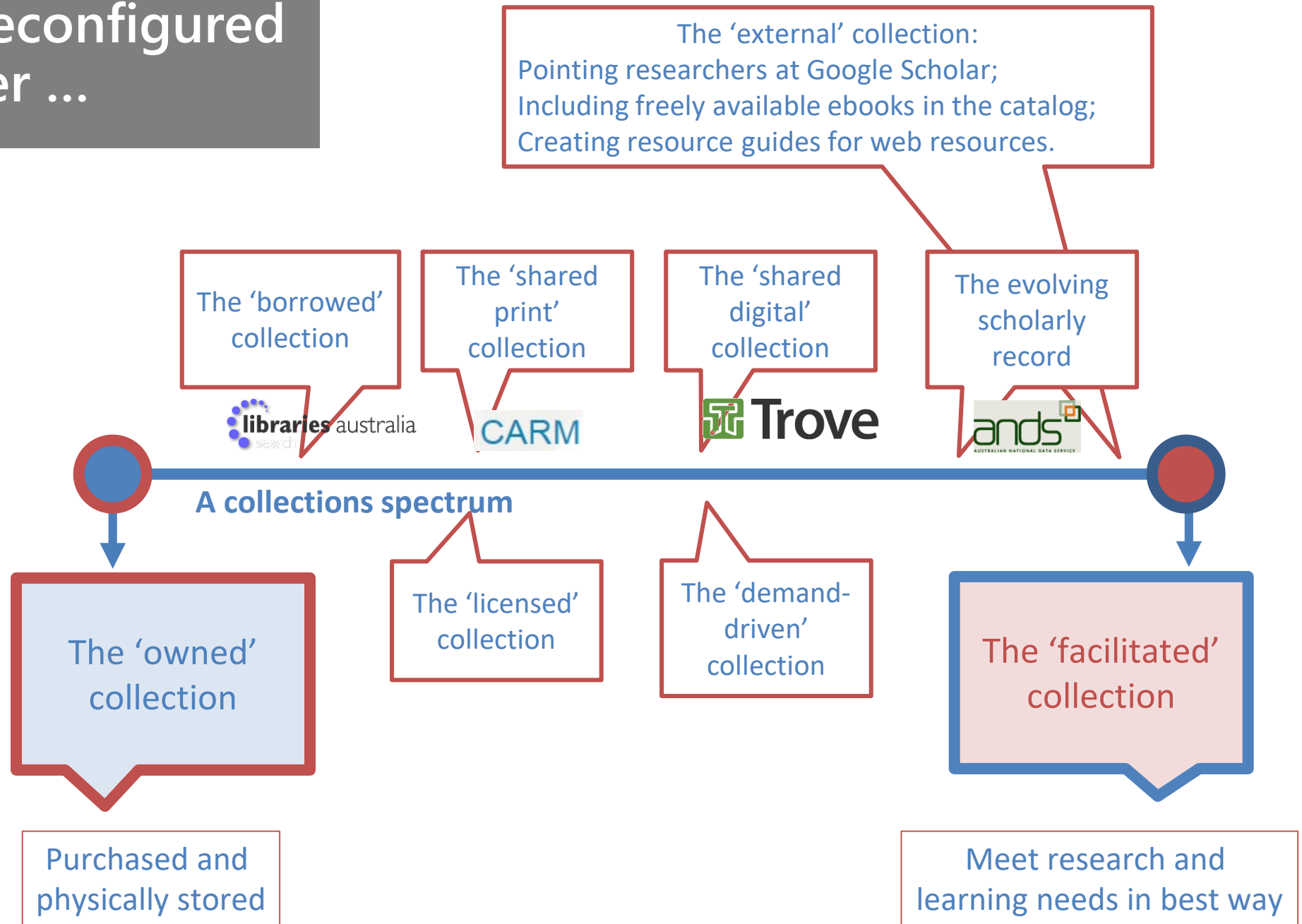
Symbol – manifesting community value and identity.

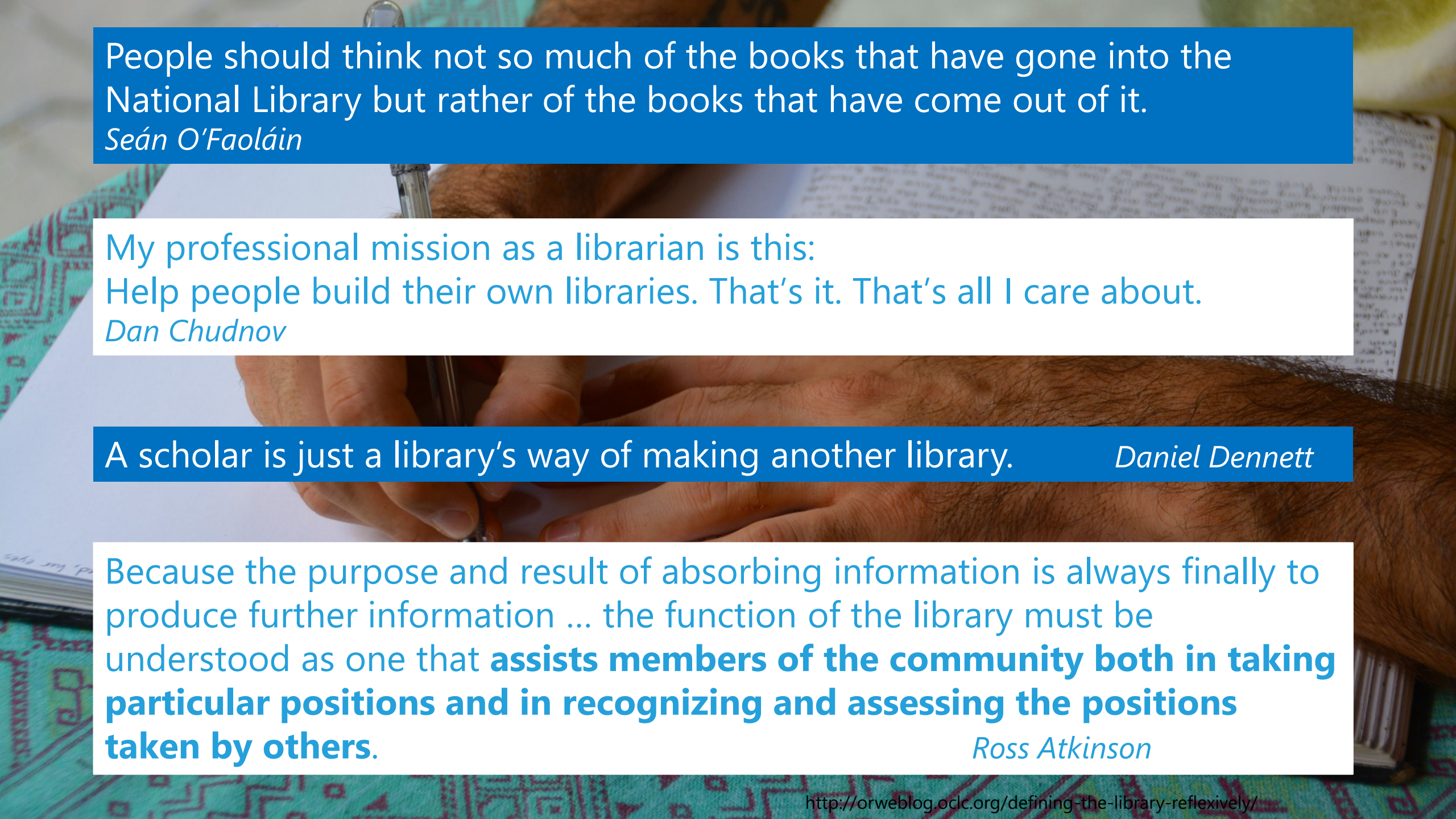
Skills – making diverse expertise visible.

A low-angle, upward-looking photograph of a modern building's exterior. The building features a curved facade with a grid of glass panels and dark structural elements. The sky is a clear, vibrant blue with some light, wispy clouds. In the upper right corner, the green leaves of a tree are visible, partially obscuring the sky. A blue rectangular box with a white border is positioned in the upper right quadrant of the image, containing white text.

Collections –
reconfiguring
around the user,
the distinctive,
the creative
process.

Collections – reconfigured around the user ...





People should think not so much of the books that have gone into the National Library but rather of the books that have come out of it.

Seán O'Faoláin

My professional mission as a librarian is this:
Help people build their own libraries. That's it. That's all I care about.

Dan Chudnov

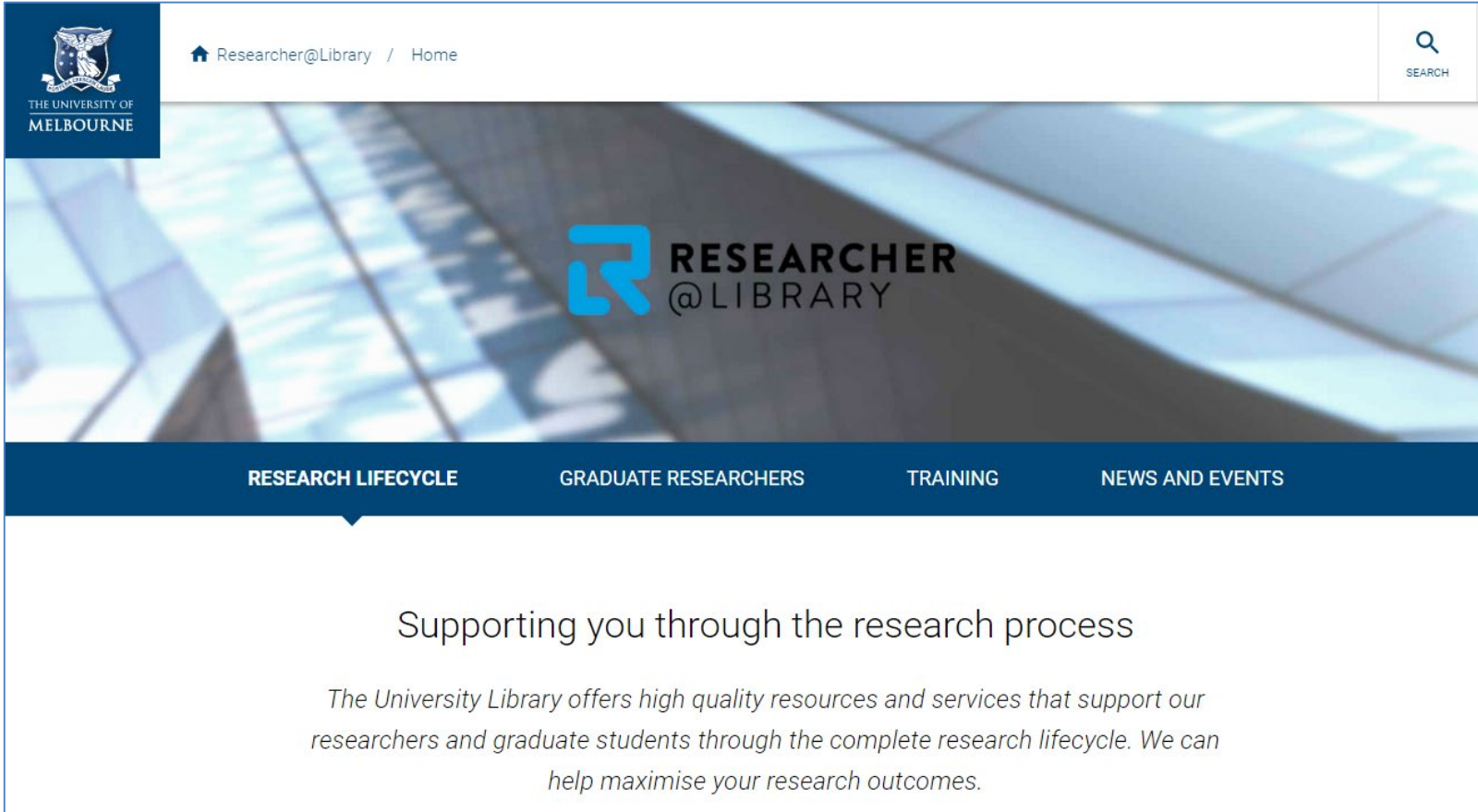
A scholar is just a library's way of making another library. *Daniel Dennett*

Because the purpose and result of absorbing information is always finally to produce further information ... the function of the library must be understood as one that **assists members of the community both in taking particular positions and in recognizing and assessing the positions taken by others.**

Ross Atkinson

Collections –
reconfigured
around the creative
process ...





From consumption to creation:

- Support process as well as product, making as well as taking
- Workflow is the new content..
- Support for publishing and digital scholarship.
- An inside out perspective increasingly important.



I Street Press: A Community Writing & Publishing Center
Sacramento City Library



Libraries supporting *local authors*



A Day in Allen County

May 1, 2015

Pass It On...Through Photography

send pictures:

Email pictures to Genealogy@ACPL.Info

Twitter #DayinAllenCo2015

Upload at www.facebook.com/GenealogyCenter

Instagram @GenealogyCenter

Libraries creating *community awareness*

The Genealogy Center - Allen County Public Library - Fort Wayne
Genealogy@ACPL.Info - 260-421-1225



Library spaces for HOMAGO: *Hang out, Mess around, Geek out*

Teen Central
Boston Public Library



[The technology is] deeply, deeply **democratic**. All sorts of people can create, publish, share... the role of the Library is to be a **custodian** of knowledge, but more importantly it is to be **enablers**, and to help citizens **embrace digital literacy**.
Alan Smith

Collections –
reconfigured
around the distinctive



Maison de la littérature,
la Bibliothèque de Québec

Slide via Martha Whitehead
Queen's University, Canada

Retain our values: supporting local cultures in a global
knowledge commons



OAK PARK CREATES

earch...

☒ Catalog ☐ Website

SERVICES

EVENTS

[Make a Request](#)

Special Collections

[Home](#) >> [Collections & Download](#) >> Special Collections

Digital Archive

Steiner Index

Hacking Hemingway

Are you a self-published author? A musician who just recorded some songs? A filmmaker working on a new project? Oak Park Creates is your opportunity to share your published work—your book, your music, your movie—and have it become an item in a unique and growing “local creators” collection. [Learn more](#) and [find materials in the SWAN catalog](#).

We curate specific cultural and heritage collections that reflect the unique values and enduring legacies of Oak Park. We are a member of [Chicago Collections](#) and employ a full-time [Curator for Special Collections](#). Explore the



Curated Collections



“We create specific cultural and heritage collections that reflect the unique values and enduring legacies of Oak Park.”

Edgar Rice Burroughs

Edgar Rice Burroughs first moved to Oak Park in 1910 and lived here for most of the decade. Early in his tenure here, he completed the first of his Tarzan and his Martian stories, and by 1918 the first of the Tarzan



Bought
Licensed

Outside, in

Library as broker
Maximise efficiency

Generally
available

Distinctive

Library as provider
Maximise discoverability

Inside, out

Expertise
Special collections
Research and learning materials



Places –
reconfiguring
around user
experiences.



By **reducing the square feet needed to hold collections**, we can then increase the amount of user seating offered the university, and house specialty spaces that support graduate student and faculty research, including new services such as **digital scholarship, digital humanities, and research data services** which will be coming into being in the next few months and years. Joe Lucia

Temple University Library (plans)
Philadelphia, PA

A place for connection and learning



Almere Public Library,
The Netherlands



A place for connection and learning



Search

[MLibrary](#)

[ArticlesPlus](#)

[Catalog](#)

Browse

- Recommended Resources by Subject -

[Ask](#)
[Get Help](#)

Clark Library

About the Clark Library

[Staff Listing](#)

[Stephen S. Clark](#)

[Blogs](#)

[Third Thursday Open House](#)

[Exhibits](#)

Collections

[Map Collections](#)

[Digital Map Collections](#)

[Map Collection Highlights](#)

[Government Information Collection](#)

[Highlights of the Government Information Collection](#)

[ClarkData Geospatial Data Server](#)

Services

[Spatial and Numeric Data Services \(SAND\)](#)

[Consultations and Appointments](#)

[Reference](#)

[Home](#) > [Libraries and Departments](#) > Clark Library

Stephen S. Clark Library

Harlan Hatcher Graduate Library

913 S. University Avenue

Ann Arbor, MI 48109-1190

(734) 764-0410 (p)

clarklibrary@umich.edu

[Staff Listing](#)

[Maps, Directions & Accessibility](#)

Blog: [Graticule](#)

The Clark Library combines our map collection, government information center, and spatial and numeric data services. It is a rich and unique resource, where students and scholars from every discipline—as well as those working across disciplines—can find the materials, tools, and expertise to meet their research needs.

This library is a congressionally designated



Hours this week:

Sunday	Closed
Monday	08:00 AM - 7:00 PM
Tuesday	08:00 AM - 7:00 PM
Wednesday	08:00 AM - 7:00 PM
Thursday	08:00 AM - 7:00 PM
Friday	08:00 AM - 7:00 PM
Saturday	Closed

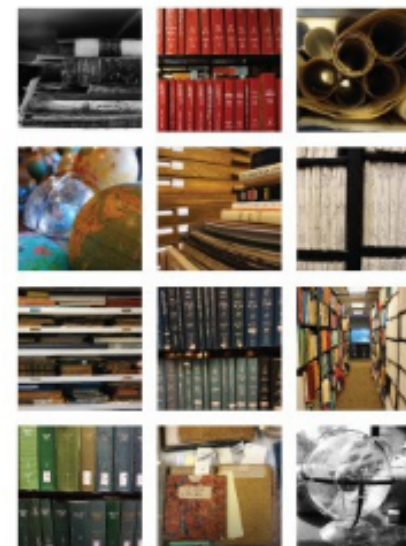
[Hours this Month](#)

Blog

[Mapping Black Central Europe](#)

Posted: May 2, 2016

The University of Michigan class "Germany and the Black Diaspora," taught by Professor Kira Thurman, worked over the course of the Winter 2016 semester to create a map of Black Central Europe. Each student identified important figures, events or objects to research and create pins for; the pins were then combined into one, larger map. A central theme guided the class: "making the invisible visible."



High value space: Specialist Expertise, Exhibition, Equipment

[Workshops](#)

Resources

[SAND North](#)

guaranteed by public law. (Title 44 United States Code)

We are delighted to announce the awardees of the Library Data Grants, a new program to acquire commercially available data by request

Some 19 universities have either moved into a new library or refurbished an existing one in the past two years, according to a report by the Society of College, National and University Libraries (Sconul), which represents about 170 higher education institutions in the UK and the Republic of Ireland....

“The quality of light, furniture and general ambience is now very different in university libraries – students want inspirational spaces to learn,” explains Mara Maricevic, head of higher education at the British Library, where students regularly queue in the morning for entry all the way down Euston Road.

How campus libraries became the place to read, pray, learn

Let there be Light!

Transparency became an architectural theme at many levels, allowing an inviting and welcoming building that is accessible and open to public view. At the same time it was important that the building was not merely ‘transparent’, or only expose what is accommodated within, but that it represented and embodied the values of the community. Accessibility, openness, transparency and sustainability were key values as was a general sense of aspiration.



Surry Hills Library and Community Centre / FJMT





Academic

Productive
researchers.

Successful
students.

University of Helsinki Main Library
Helsinki, Finland

Successful students.



	Recommendation	Commencement Priority
R1.	<i>The Libraries will give priority to serving our current students and staff first, then alumni and future students, followed by other universities and institutions, and finally industry and the broader public.</i>	Immediate
R2.	<i>The Libraries will regularly re-engineer processes to ensure maximum service efficiency and effectiveness across all future library functions and teams.</i>	Medium
R3.	<i>The Libraries will ensure service transformation and reinvention via ongoing co-creation with its community to ensure optimal online and face-to-face experiences.</i>	Medium
R4.	<i>The Libraries will lead and partner in the development of our students' advanced digital literacy skills embedded in the curriculum.</i>	Immediate
R5.	<i>The Libraries will lead and partner in the provision of access to open educational resources for learning and teaching.</i>	Immediate
R6.	<i>The Libraries will lead and partner on learning enhancement and innovation, including in the areas of curriculum design, pedagogical development, creation of new digital learning resources, and professional support and development for academic staff.</i>	Medium
R7.	<i>Library staff will be appropriately skilled to lead and support new University learning and teaching initiatives and directions.</i>	Medium
R8.	<i>The Libraries will use our unique position to support student engagement, retention and success.</i>	Medium
R9.	<i>The Libraries will re-align research support to ensure appropriate skills exist to serve evolving research needs.</i>	Medium
R10.	<i>The Libraries will actively promote the use of its information assets in global research; including increasing presentation of University research data.</i>	Immediate
R11.	<i>The Libraries will consider a research hub that incorporates spaces, technology and services required by researchers across our varied disciplines.</i>	Immediate



Productive researchers.

	Recommendation	Commencement Priority
R12.	<i>The Libraries will sharply reduce low-use onsite collections and rationalise the use of off-site storage facilities.</i>	Immediate
R13.	<i>The Libraries will enhance e-resources to continuously support the University academic program and research strengths. The Libraries will lead the promotion of digital content.</i>	Medium
R14.	<i>The Libraries will collaborate in leading-edge initiatives that maximise Open Access and/or 'best value' for licencing agreements and purchased materials.</i>	Medium
R15.	<i>The Libraries will promote access to and facilitate the discovery of our unique special collections.</i>	Medium

Collections:
Reconfigured around the
user, the distinctive, the
created



THE UNIVERSITY
of ADELAIDE

Place:
Reconfigured around
experiences

	Recommendation	Commencement Priority
R21.	<i>Investment priority will be the refurbishment of the Barr Smith Library.</i>	Long
R22.	<i>The Libraries will relocate the Music Library and continue the changes already planned and underway in the Law Library, while the Waite and Roseworthy Libraries need operational and space usage reviews.</i>	Long
R23.	<i>The physical space investment priority will be based on library clients' clearly stated needs and will result in new and inviting space aligned with the Libraries' mission, vision and values.</i>	Long
R24.	<i>The Libraries will create new learning spaces closely attuned to the evolving needs of our students, our curricula and our teaching approaches.</i>	Long
R25.	<i>The Libraries will innovate and partner to deliver a great discovery layer and will develop analytics to gain insight and enable continuous improvement.</i>	Long

ABOUT US CAREER OPPORTUNITIES

Director Libraries & Curriculum Support Ref. 50045680

Salary: Competitive Salary and Rewards package

[Apply](#)

[Back to List](#)

Department: Registrar & Secretary

Location: Central London

The power of learning... The presence to lead

From Alexander Fleming to Vivienne Westwood, The University of Westminster has always inspired students to make the most of their talents. This new role will play a major part in ensuring our students continue to have access to high quality learning resources and support and enjoy excellent employment prospects.

Your role

Our learning support and employability services are vital to our students, enabling them to make the most of the facilities and learning we provide. That's why we've created this new role, managing these services and ensuring our students enjoy the best possible experience at the university.

As a strategic leader, you'll help develop our plans for a variety of student support and learning resources and play a key role in delivering the University's vision. At the same time, you'll identify, develop and lead a range of initiatives to help improve the overall academic experience for students. This will include creating and implementing strategies for our libraries and e-learning support, integrated learning development and employability services, research support, archives and records management

Your skills and experience

With a background in libraries, e-learning, archives or career development and employability, you'll have proven experience of managing, developing and delivering effective professional support services and hold a relevant qualification. Evidence of your ability to develop and deliver effective strategies and lead change will be essential, together with the presence to gain the respect of people at all levels. You'll also have an appreciation of the needs of both students and academic staff, alongside the ability to play a significant role in our senior management group.

Why work with us

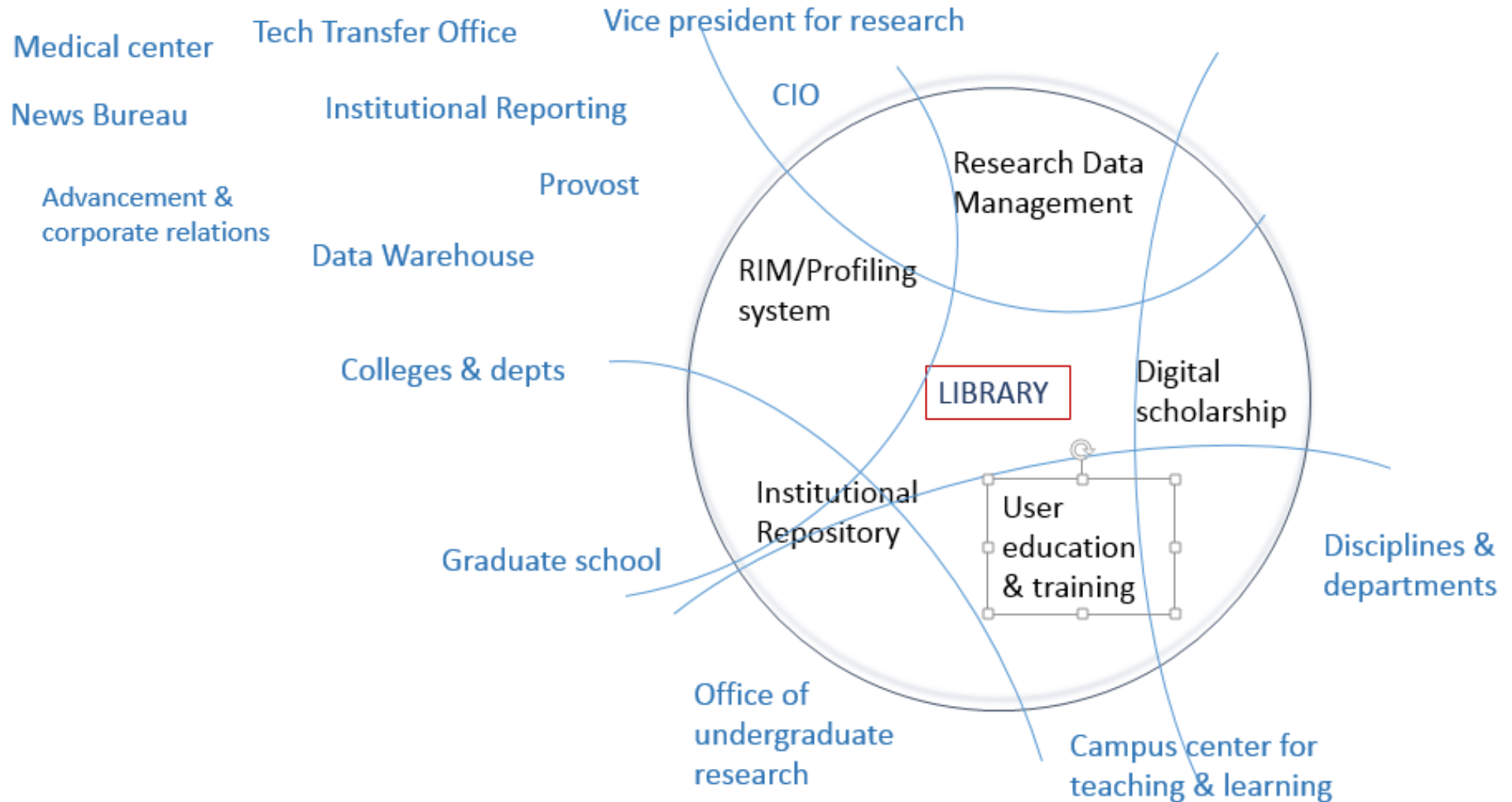


Develop your career in one of our schools or departments.

For corporate services



A cooperative enterprise: research support in the US research university





Public

Lives of learning
and creativity.

Strong
communities.

MakeX is a mobile makerspace created by the Palo Alto City Library that was created *by teens* for teens.

THE IMPACT OF LIBRARIES AS CREATIVE SPACES



CRITERION 1 ACCESSING RESOURCES

Providing assistance and enabling access to information and materials such as craft supplies, historical records and digital media.

CRITERION 2 IDEA BUILDING

Exposing the public to new ideas and facilitating the development of curiosity, experimentation and risk taking.

CRITERION 3 CIVIC ENGAGEMENT

Engaging the public in democracy, citizenship, rehabilitation and collaborative work with other public and private institutions.

CRITERION 4 COMMUNITY DEVELOPMENT

Providing a place for community development to happen by encouraging cultural diversity, equality, equity and social capital where appropriate.

CRITERION 5 CULTURAL PARTICIPATION

Facilitating public culture by organising and delivering formal and informal events that allow people to participate in diverse ways.

CRITERION 6 HEALTH AND WELLBEING

Providing relaxation, entertainment and leisure activities that promote physical and mental wellbeing.

CRITERION 7 EDUCATIONAL ATTAINMENT

Making possible, through creative practice, continuous learning and informal approaches to education that offer an alternative to formal institutions.

CRITERION 8 ECONOMIC PRODUCTIVITY

Enabling access to mentoring and networking for business and occupational purposes, and generating income through creative practice.

TABLE 1
*Outline of Creative Spaces
Impact Framework Criteria*

2016 Innovations Initiative Categories

Top Innovators Publications

2015 Innovations

2014 Innovations

2013 Innovations

2012 Innovations

2011 Innovations

2010 Innovations

2016 INNOVATIONS INITIATIVE CATEGORIES

The Innovations Initiative divides library members' innovations into ten categories that demonstrate the value and impact of public library service in the 21st century. Read the descriptions below:

Learning: Birth thru Teens

Innovations in child/parent/family learning; sensory and early childhood literacies; STEM/STEAM; summer learning; learning labs; maker spaces; partnerships for children's education.

Learning: Adults

Innovations in reading and all literacies; GED/high school diploma; ESL, cultural enrichment; partnerships for adult education.

Collections

Innovations in the curation and/or creation of print and digital content; approaches for measuring use of collections.

Customer Experience

Innovations in reaching new users; enhancing the customer experience. New approaches to organizing the library's staff and/or space to better meet user needs.

Positioning the Library

Innovations in sharing the library's value including communications and marketing strategies; partnerships that enhance awareness of the library's role in the community's strategic priorities.

Workforce and Economic Development

Innovations that increase individual work/job skills; digital training. Innovations that support entrepreneur and small business development through resources, programs, services co-working space.

Race and Social Equity

Innovations in promoting social and racial equity within the community; ensuring equal access, equitable opportunities, treatment, impacts and outcomes for all.

Civic and Community Engagement

Innovations that support civic engagement and a strong democracy.

Health, Safety, and Sustainability

Innovations for advancing community health priorities; addressing access to health care and promoting critical health outcomes, participating in community public safety and local sustainability goals.

Organizational Change and Strategic Management

Innovations in the library organization and staff; qualitative and quantitative approaches to measure impact and outcomes.



... the Libraries must become more sophisticated in how it identifies and presents its stories of success and impact to external stakeholders (*Success enables success*).

Damon Jaggars, The Ohio State University

Story –
reconfiguring
around sources
of value to the
community.



Creating **value** for our host systems always involves three things:

1. Librarians must understand their host systems;
2. **they must understand the source of their claim to being a legitimate part of their system;**
3. and they must do their work well so the system is better because they are there.

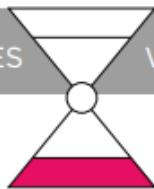
It's usually far more a matter of asking and listening than it is of telling and pleading.

Eleanor Joe Rodger

Value?

ROI?

Assessment?



TO EXTERNAL AUDIENCES:

STRATEGIC FOCUS

INVESTMENTS

OUTCOMES

YOUNG MINDSEncouraging learning
and growth**Ready for Kindergarten**

- Home Visits/SPARK
- Ready for K Spaces
- Storytimes
- Book Lessons

Third Grade Reading

- Reading Buddies
- Summer Reading Club

High School Graduation

- VolunTeens
- Homework Help Centers
- YouMedia
- Developmental Assets
- Career and College Prep

A foundation for
a successful life**MY LIBRARY**Creating the next
generation library**My Way**

- 24 hours through columbuslibrary.org
- 14-Member Library Consortium
- 2020 Vision Plan
- Mobile App
- Customer Call Center

My Content

- High Interest, Popular Collections
- Local Digital Collections
- eResources
- eBooks
- Streaming Content

A library that
works for me**LIFE SKILLS**Embracing challenges and
providing opportunities**Prepared for Life**

- GED
- Financial Literacy
- ESOL

Prepared to Work

- Columbus State Partnership
- Computer Classes

A community that
reaches its potential



Library

-
- [About us](#)
- [Libraries](#)
- [Collections](#)
- [Research and learning skills](#)
- [Managing research data](#)
- [Services and facilities](#)
- [Alumni and visitors](#)



Get a head start on your studies

Get tips for good study habits at a Library drop-in session





About us

Libraries

Collections

Research and
learning skills

Managing
research data

Services and
facilities

Alumni and
visitors

Collections



Outstanding
scholarly
resources



Special collections

Maps to multimedia, Slavic to Chinese, physical to digital, our special collections draw interest from scholars around the world.

[Explore our special collections](#)



Exhibitions

Exhibitions showcase the breadth and quality of our collections and are presented both physically and online.

[Explore our exhibitions](#)



About us



Libraries



Collections



Research and learning skills



Managing research data



Services and facilities



Alumni and visitors



Research and learning skills



Developing critical and creative scholars



Digital learning seminar

Educators are invited to attend a free seminar on future applications of digital learning at universities, this July.



Research & Learning Online

Your gateway to the Library's online materials.



About us



Libraries



Collections



Research and
learning skills



Managing
research data



Services and
facilities



Alumni and
visitors



Managing research data



Data collection, storage and dissemination



Benefits of data planning

Find out more

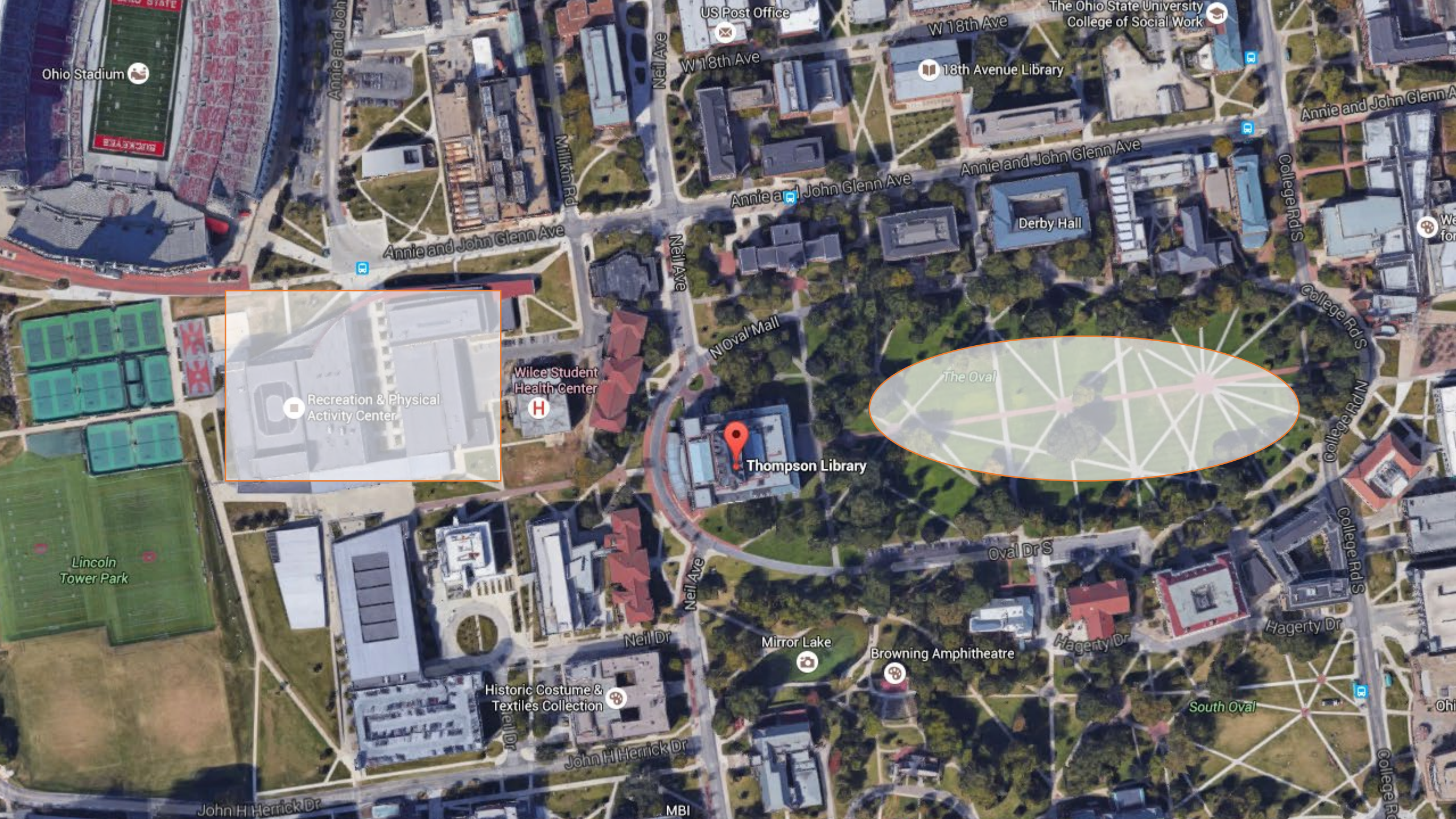


Data management at Monash University

Find out more



Symbol –
manifesting
community value
and identity.



Ohio Stadium

US Post Office

The Ohio State University
College of Social Work

W 18th Ave

W 18th Ave

18th Avenue Library

Annie and John

Neil Ave

Annie and John Glenn Ave

Annie and John Glenn Ave

Annie and John Glenn A

Annie and John Glenn Ave

Millikin Rd

Neil Ave

Derby Hall

College Rd S

N Oval Mall

The Oval

Recreation & Physical
Activity Center

Wilce Student
Health Center

Thompson Library

Lincoln
Tower Park

Oval Dr S

Neil Dr

Mirror Lake

Browning Amphitheatre

Hagerty Dr

Hagerty Dr


Historic Costume &
Textiles Collection

John H Herrick Dr

MBI

John H Herrick Dr

South Oval

A photograph of a campus scene. In the background, a multi-story brick building is partially visible through the branches of several large, leafy green trees. A traffic light is visible on the left side of the frame. In the foreground on the right, a paved road curves, with a white-painted curb that has the words "N George" written on it. The sky is clear and blue.

“You might think that the library is at the intersection of Frederick and George Streets, but it is actually at the **intersection of scholarship, innovation, creativity and collaboration**. And that’s the road to our future.”

President Francine McNairy, Millersville University
Convocation Address, 2010

A photograph of the Renton Public Library at dusk. The building is a long, single-story structure with a dark roof and a large glass facade. Inside, the library is brightly lit, showing bookshelves, tables, and colorful decorations. The building is framed by dark, leafy trees on both sides. In the foreground, a body of water reflects the sky and the building. The sky is a mix of orange, pink, and purple hues.

Libraries projecting, preserving community identity

Renton Public Library
Renton, WA



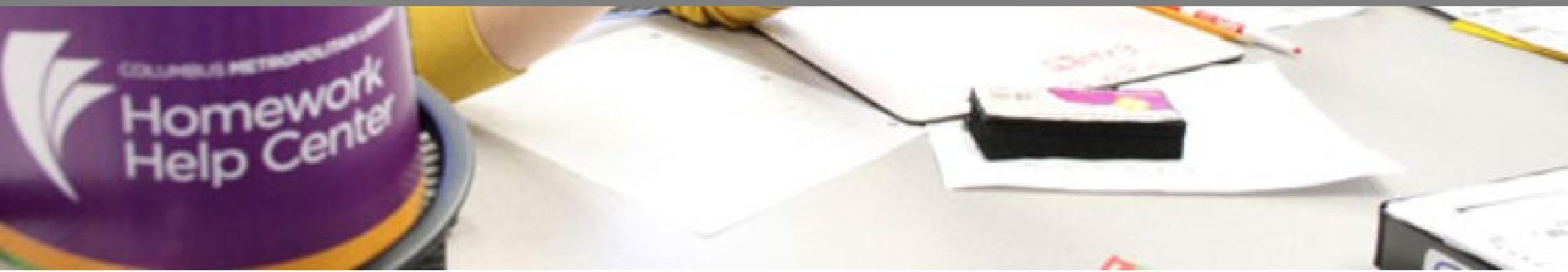
**Wrangler
Guide
Concierge**

Rangeview District libraries, Colorado

**Skills –
making diverse
expertise visible.**



New skillsets & new services to serve new populations



Divergent: focused on understanding the source of their value within their communities and responding.

Convergent: shared directions, variably executed.

Public	Academic
Lives of learning and creativity.	Productive researchers.
Strong communities.	Successful students.


Collections – reconfiguring around the user, the distinctive, the creative process.

Places – reconfiguring around user experiences.


Story – reconfiguring around sources of value to the community.

Symbol – manifesting community value and identity.

Skills – making diverse expertise visible.




The library should not provide an argument for a particular case, but demonstrate that there is always another case to be made. The notion that **the library is a place that has no agenda other than allowing people to invent their own agendas** is what makes it an indispensable resource for a democracy. It is where we can learn **not just to be readers**, but to be the **authors** of our own destiny. Fintan O'Toole





The library
agenda

To be an
advocate and a
partner in the
learning,
creating and
remembering
lives of their
users.



**STOP
THE
WAR !**

"... the Linen Hall Library was the only institution in Belfast which could provide an impartial collection of books on the conflict upon which we reporters could rely. ... No politician, no government can conceal the sins and omissions of the past or conceal the possibilities for the future when an ordinary member of the public can walk into the Linen Hall Library and find the record of what all sides said in 1969 or 1974, 1989 or today."
Robert Fisk, Journalist



dallaspubliclibrary

Follow

49 likes

3d

dallaspubliclibrary They protect, we collect. Some of the patches left at the Dallas Police Department fallen officers' memorial. They're just a part of the many items library staff will be cataloging & preserving.

#DallasStrong @dallaspd
@dallaspubliclibrary



Libraries and anamnesis

Photo: Jo Giudice, Dallas Public Library

@LorcanD

dlr Lexlcon, Dun Laoghaire, Ireland

Thank you ...

Lorcan Dempsey, OCLC



Created with a lot of help from my friends at OCLC: Helene Blowers, Liz Morris and Constance Malpas.